

What's That Sound?

Test how well you know sounds. Choose a word from the list below and match it to the picture that makes that sound. After you have matched the sounds to the picture, you can color them.

bang

woof

squeak

meow

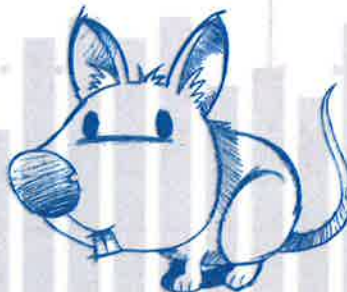
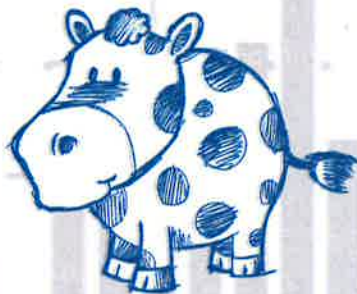
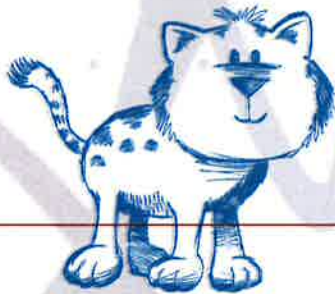
buzz

tick tock

vroom

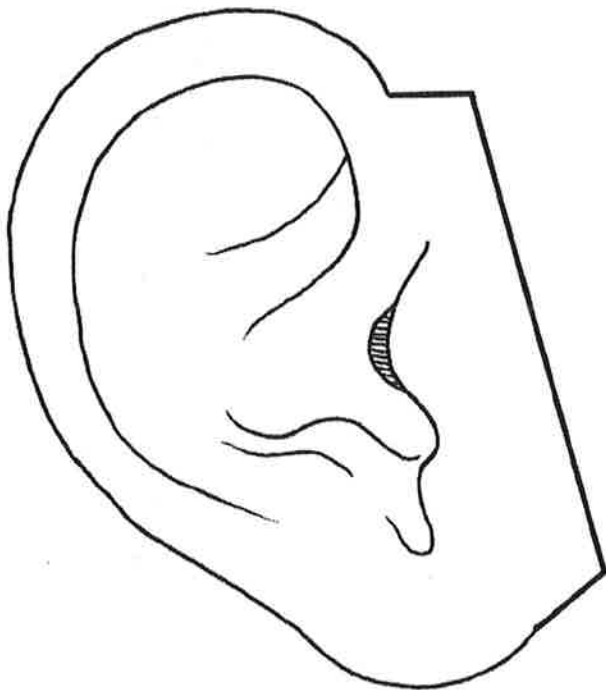
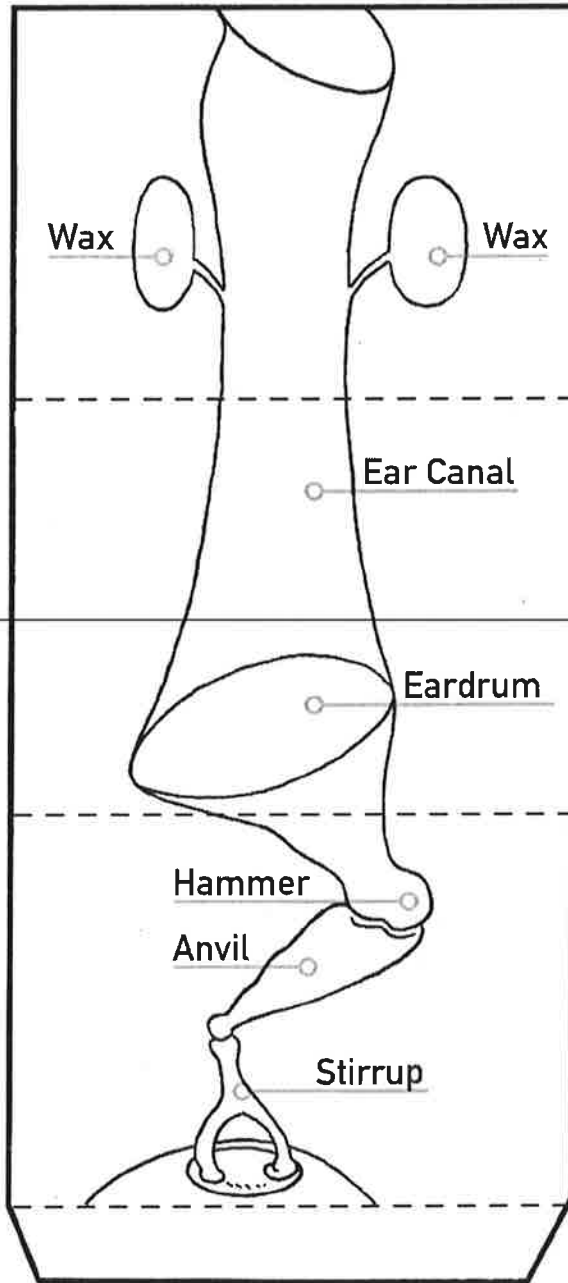
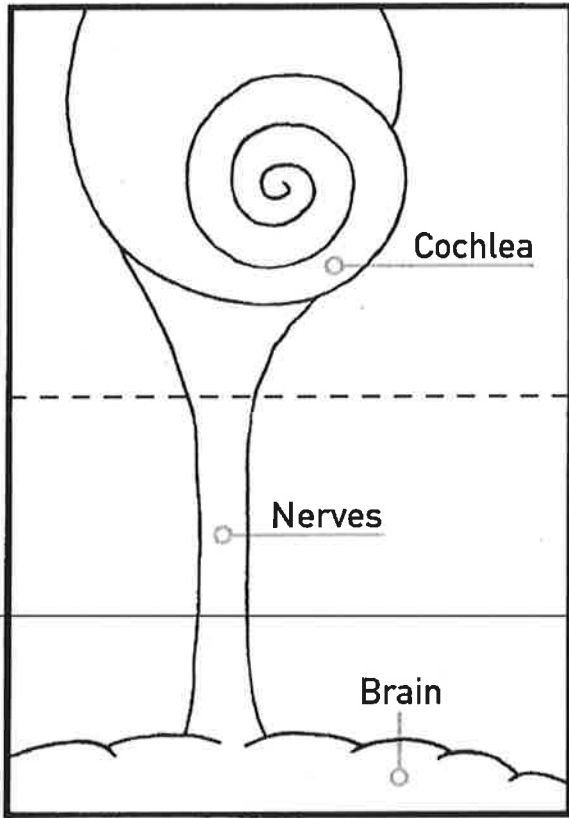
crack

moo

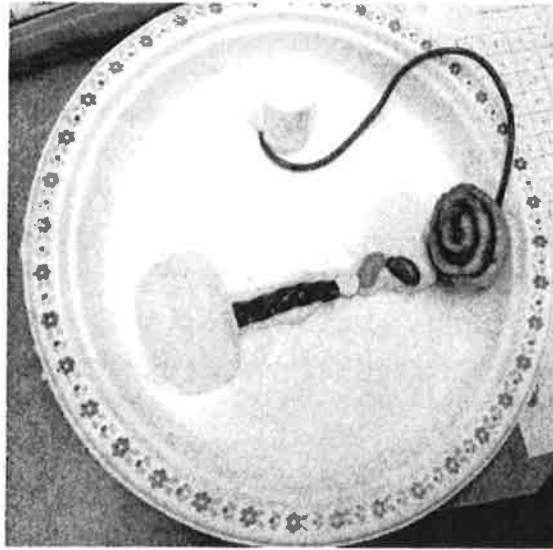


I'm All Ears

Construct a mini-model of the ear. Cut out the three diagram pieces and tape them together to make one long strip. Fold the strip along the dotted lines so that the ear is facing outward.



Teaching the Parts of the Ear via the 'Edible Ear'



'The Edible Ear' Supply List

Have the teacher prepare items in baggies ahead of time. Each child will also require a paper plate. Per child:

PINNA: 1 Pringle chip or an Arrowroot cookie

EAR CANAL: 2 inch piece of red licorice Twizzler

Eardrum (TM): 1 round, flat candy (e.g. sweethearts, bottle cap candies)

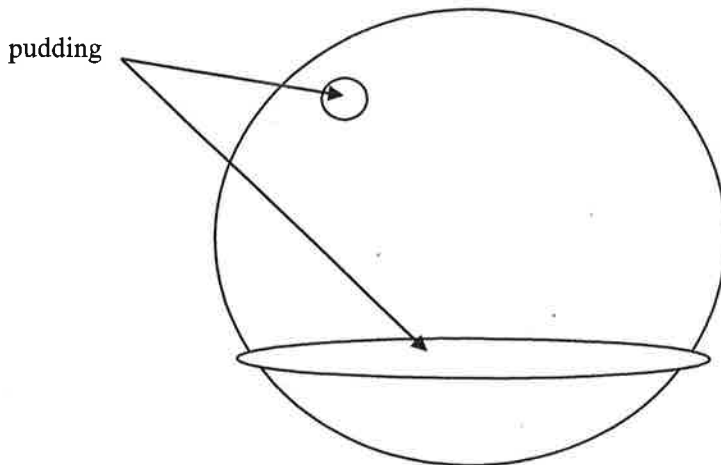
OSSICLES: 3 jelly beans

COCHLEA: Mini cinnamon bun or a slice of Swiss Role (this works best) – or anything with a spiral pattern

CN VIII: 8 inch (approx.) piece of shoestring licorice

BRAIN: 1 large marshmallow

GLUE (CERUMEN): Some vanilla (cerumen flavored) pudding will be needed to use as 'glue'. This can be prepared in a large bowl a head of time. Some teachers prefer to use small individual containers. One individual container will be able to be used for 3 students. Prior to the Edible Ear activity I will smear the pudding across the middle of the paper plate so that the parts of the ear will stick to it (2D). I put an extra dab of pudding at the top of the plate for the marshmallow.



Thanks to Krista Yukow for her contribution of this imaginative activity!